



Dekker Centre Lighting Specs

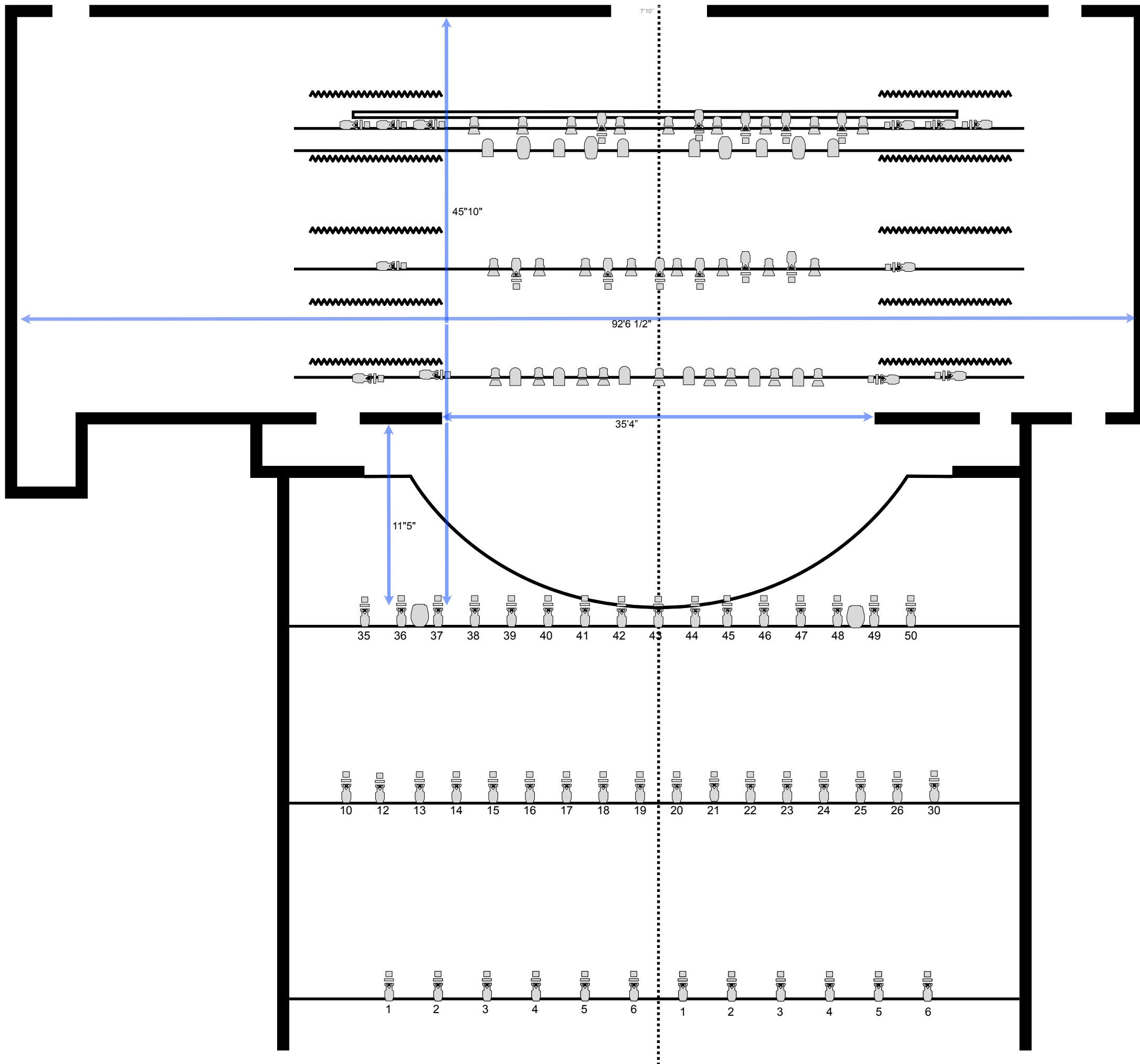
Control: ETC Ion Classic with ETC20 Fader Wing

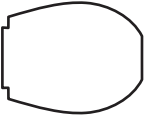
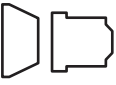






Dimming: ETC SensorChem + sensorrack with 145 available circuits

Brand	Fixture	Count
ETC	Source4 19	34
ETC	Source4 26	31
ETC	Source4 36	29
ETC	S4 Fresnel	27
Aurora	Cyc 3 Cell	11
Aurora	Ground 3 cell	10
Martin	Era 300 Profiles	6
ETC	ColorPars	12
Elation	Fuze Wash Z350	6

There are two permanent onstage lighting positions. LX1 is immediately upstage of the main curtain. It contains top wash, and two tips per side. LX5 is upstage and houses our cyc lights in a three colour wash. LX2, 3, and 4 are floating, 2 & 4 are in front of the mid traveller with 3 behind. 2 and 4 have tips and top wash. 3 has colorpars and era 300 movers.

Gel Stock is limited, and we suggest visiting groups bring any colour they may require.



-  Martin 700
-  ETC Fresnel
-  Martin 300
-  ETC S4 no lens°
-  ETC S4 19°
-  ETC S4 26°
-  ETC S4 36°
-  Etc ColorPar



Dekker Centre Audio Specs

Type	Brand	Model	Count
Audio Board	Digico	S31	1
	Yamaha	LS9-32	1
Audio Rack	Digico	D2	1
Snake	Rapco	14 send/4 return	2
Mic	Shure	Beta 52A	1
		Beta 57A	5
		Beta 58A	2
		Beta 98AD/C	5
	Crown	SM81	4
		PCC160	1
		PCC161	1
		PCC162	1
		PCC163	1
		PCC164	1
Wireless Mic	Shure	SLX4Receiver	8
		SLX2Hand	8
		SLX1 Belt	2
Media Playback	Tascam	CDRW	1
		CD	1
		DVD	1
		HifiWalker	H2touch mp3
Monitors	QSC	KW122	6
Speakers	Meyer	UPA-1P	2
		UPA-1J	2
		MM-4XP	5
		600-HP	1
	QSC	KLA12	2
		KS118	2
		DI	Radial
Pro48	1		